

# Contribute to a more Sustainable Pittsburgh

**HERE'S HOW:** The strategic initiatives below are designed to accelerate sustainability for the region. Please join with many leaders like yourself who are part of the progress by providing financial support as invited on the reverse side.



## OUR MISSION

*Sustainable Pittsburgh affects decision-making in the Pittsburgh Region to integrate economic prosperity, social equity, and environmental quality as the enduring accountability bringing sustainable solutions for communities and businesses.*

## OUR VISION

Through the policy and practice of sustainable development, Southwestern Pennsylvania has a strong economy in which all people can live to their potential, are engaged, and prosper within the means of a clean and healthy environment.

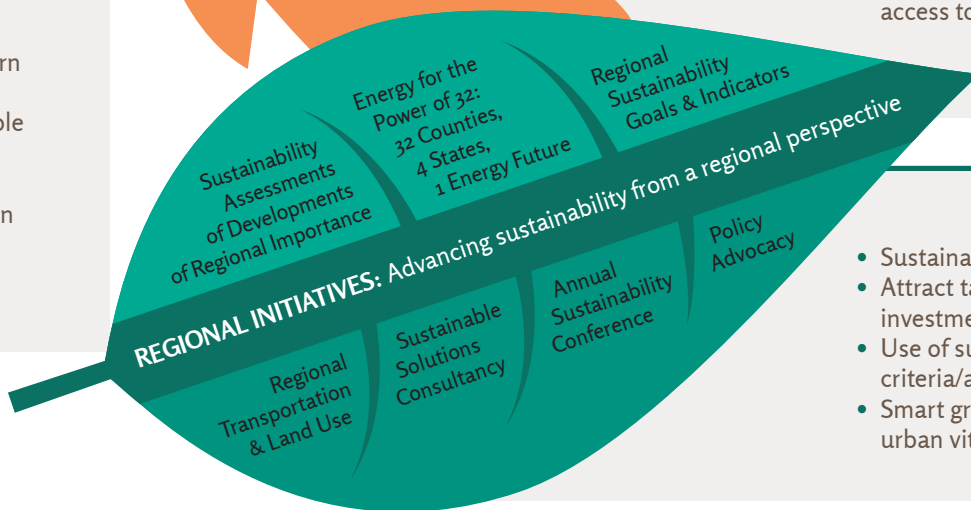


## RESULTS

- Higher performing organizations
- Saving money and resources
- Innovation, social equity, profits
- Reduced emissions, less waste, greater efficiency



- Sustainability integrated as the enduring business strategy
- Growth in sustainable enterprises
- Diverse sectors at the table tackling issues of importance
- Informed leadership with access to assistance



- Sustainable communities
- Attract talent and investment
- Use of sustainability criteria/accountability
- Smart growth; rural and urban vitality



**SUSTAINABLE PITTSBURGH**

Our name is our promise.

# Yes! I want to become a member.



SUSTAINABLE PITTSBURGH

Our name is our promise.

Enclosed is my tax deductible check payable to Sustainable Pittsburgh

or

You are welcome to pay online by credit card at [www.sustainablepittsburgh.org](http://www.sustainablepittsburgh.org)

Name

City/state/zip

Address

Phone number

Email

My membership is:  New  Renewal

Company/organization (if applicable)

**Which Sustainable Pittsburgh programs are of most interest to you?**

Date

Please place a check mark below to indicate if this membership is on behalf of yourself (individual) or your organization (corporate/municipal/nonprofit). If you wish to become a Sustaining Member (automatic payments), please visit the Sustainable Pittsburgh website for details.

## INDIVIDUAL

- \$40 – \$100 Supporting Membership
- \$125 – \$300 Leader Membership
- \$325 – \$500 Steward Membership
- \$525 – \$1000 Champion Membership

## CORPORATE/MUNICIPAL/NON-PROFIT

- \$100 – \$250 Friend (small entity)
- \$400 – \$750 Sponsor (medium entity)
- \$1000 – \$5000 Patron (large entity)
- > \$5000 Benefactor

I do not wish to be a member at this time, but please accept my donation of \$\_\_\_\_\_.

**Matching gift program** If your company has a matching gift program, please enclose the form.

Sustainable Pittsburgh  
307 Fourth Avenue, Suite 1500  
Pittsburgh, PA 15222

(412) 258-6642

[www.sustainablepittsburgh.org](http://www.sustainablepittsburgh.org)

Sustainable Pittsburgh is a 501(c)(3) organization. The official registration and financial information of Sustainable Pittsburgh may be obtained from the PA Dept. of State by calling toll-free, within PA, 1-800-732-0999. Registration does not imply endorsement.



Sustainable Pittsburgh



@SustainablePGH